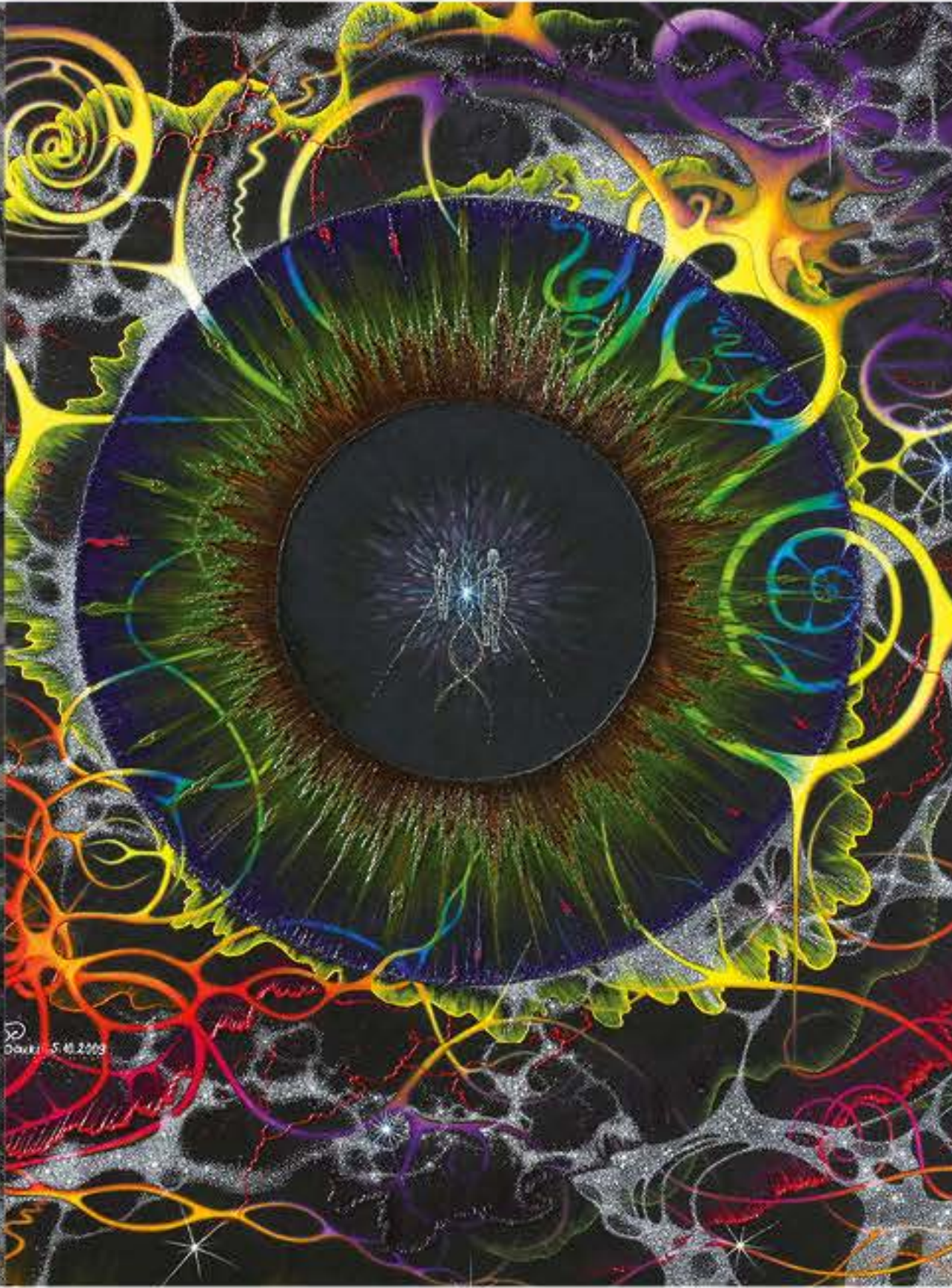


Hanne Laland
(Norway)



Natalja Nouri
(Latvia-Germany)



Nicole Majer
(Germany)



HEALING POWER OF ART

Vernissage: 31 October - 27 November 2020

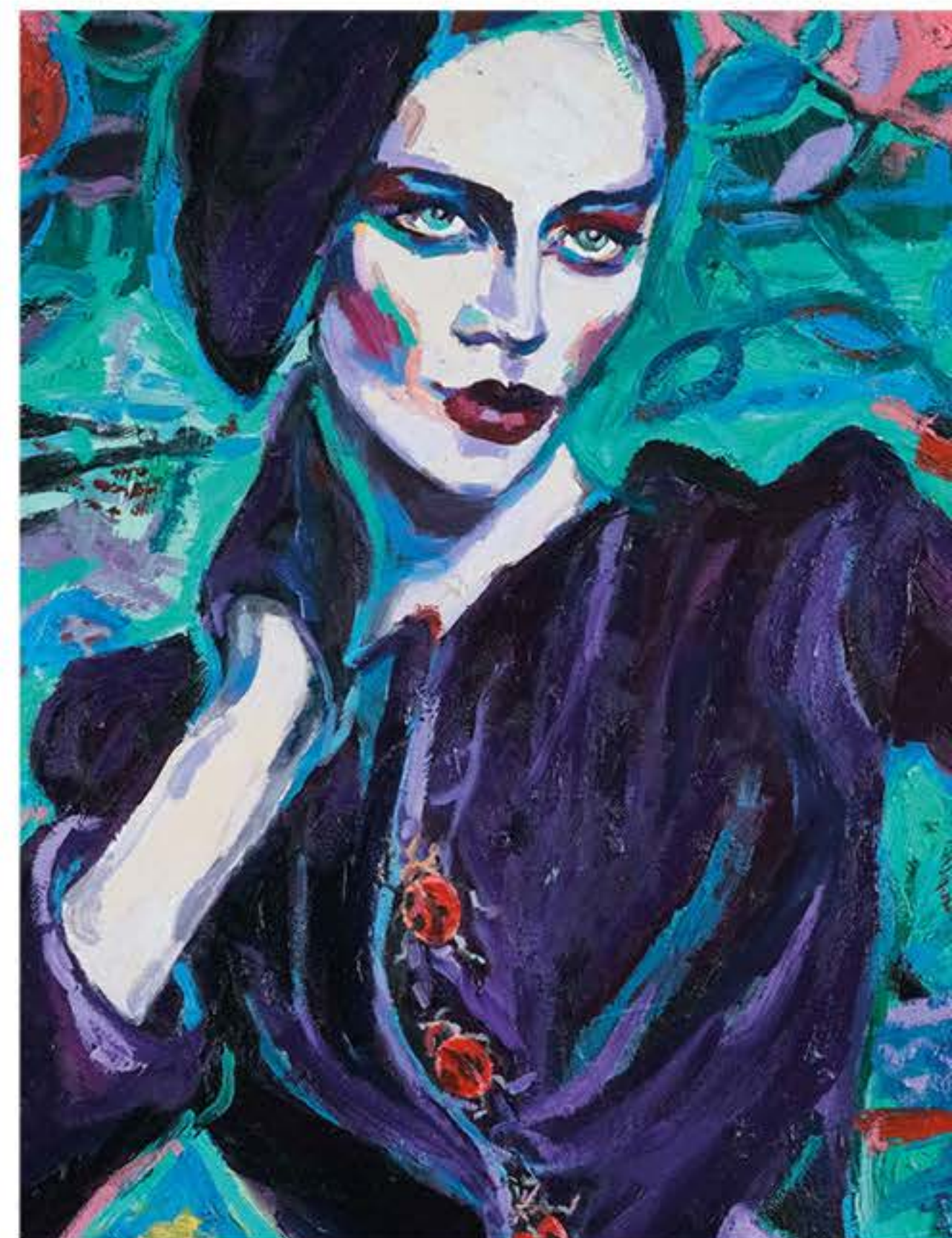


Masumi Igarashi
(Japan-Germany)



Gotenstr. 21
20097 Hamburg, Germany

PASHMIN ART
GALLERY



Saša Makarová
(Austria-Slovakia)

Healing Power of Art



Masumi Igarashi (Japan-Germany)

Hanne Laland (Norway)

Natalja Nouri (Latvia-Germany)

Nicole Majer (Germany)

Saša Makarová (Austria-Slovakia)

1 2 3 4 5 6 7

Healing Power of Art

31 October - 27 November 2020

Vernissage: 31 October 2020, 6 PM

Pashmin Art Gallery, Gotenstr. 21, 20097 Hamburg, Germany

HEALING POWER OF ART**Artists:****Nicole Majer** (Germany)**Saša Makarová** (Austria-Slovakia)**Masumi Igarashi** (Japan_Germany)**Hanne Laland** (Norway)**Natalja Nouri** (Latvia-Germany)

Viewing art and being involved in art have healing powers. It is basically derived from arts therapy, which includes other creative therapies such as drama therapy and music therapy. Back in literature the most famous version of arts therapy is depicted in One Thousand and One Nights where storytelling saves Shahrazad (Scheherazade) and heals King Shahrlyar. In a more limited sense, art has the same effect through empathy.

The American Art Therapy Association defines art therapy as: "an integrative mental health and human services profession that enriches the lives of individuals, families, and communities through active art-making, creative process, applied psychological theory, and human experience within a psychotherapeutic relationship." Especially at this turbulent time, art can help us to stay in a balance of mind.

The works by Nicole Majer (Germany), Saša Makarová (Austria-Slovakia), Masumi Igarashi (Japan_Germany), Hanne Laland (Norway), and Natalja Nouri (Latvia-Germany) represent different forms of visual art where the viewers can empathize with. Nicole Majer was born in Hamburg, Germany. She finished her schooling in 2008 at the Sankt Ansgar School by achieving her university-entrance diploma. In 2012 she finished her studies with the Bachelor of Arts (B.A.) at the AMD academy for fashion and design, in Hamburg. She passed her degree with distinction for the best constant achievement in fashion design and received therefore, "Fresenius new Talent Award" - Fashion design 2012. During her studies she did an internship as the design assistant at the high-class fashion jewellery label Mawi, London. In this context she cooperated with Hugo Boss and Disney Couture. After her education she worked for FLGNTLT and Root Tattoo. The challenge to create efficient concepts which promote the projects is something she likes a lot. She is now planning her small exclusive collection under her own label "De Fräi".

Nicole Majer has always been interested in art and its different sections, in theory and practice. Design affords her to combine creativity and fantasy with functionality. For this purpose, she benefits from her inspiration in fashion for illustrations and vice versa. Her works have been shown by Pashmin Art in different art spaces.

Saša Makarová is an Austrian-Slovak painter. Saša Makarová was born in Košice, Slovakia. She studied painting from 1987 to 1991 at the Academy of Fine Arts in Bratislava. With the fall of the Berlin Wall, she moved to Austria in 1991 and studied at the Academy of Applied Arts in Vienna, under the supervision of Prof. Adolf Frohner, who had influenced Viennese Actionism. From 1996 her works have been shown in numerous exhibitions, such as the Museum Morsbroich, Künstlerhaus Wien, Art Karlsruhe, the Viennafair and the ARCO Madrid. Her work is stylistically located between the Neuen Wilden and the Fauvists. Saša Makarová's oeuvre is a figurative exploration of the topic of woman and femininity. Challenging self-portraits, with impasto floral and ornamental elements reminiscent of Henri Matisse are her means of expression. The expressive coloring of the Brücke painters finds its way in her art as well. For this purpose, she works with subjects from myths and fairy tales, with which she creates her own world in her pictures based on the gestural painting of the Fauvists, the Neuen Wilden and the action artists. Makarová mixes her oil colors herself, with intensely glowing pigments. Appearances, such as the woodcut-like figures and bright, intense colors are reminiscent of Ernst Ludwig Kirchner or Emil Nolde.

The style, choice of color and form are conscious means for Makarová to take the viewer on an emotional journey into the artist's inner being. The Images capture intimate scenes of tense ambiguity, dressed in the aesthetic coat of sensuality. They tell us of mythological form of love, dependence and sexuality, always from the point of view of a self-determined femininity.

Masumi Igarashi was born in Sendai (Japan). She studied at Gakushuin University in Tokyo and at Tokyo Glass Art Institute. Since 1997 she has been working as a freelance artist in her own studio first in Yokohama and then in Marne, Germany. She has participated in many national and international exhibitions. Internationally, her works were presented in 2005 in Glasrijk Tubbergen, Netherlands, and by Pashmin Art Gallery at Scope Miami 2015, and scope New York 2016. In addition, her work will be shown in public institutional collections at Tubbergen Community Council, Netherlands, and at the Ernsting Foundation in Coesfeld-Lette, Germany.

In her works, she deals with forms that fulfil objectivity and abstraction. Her interest is in form, which is generated by movement and thus is abstracted; as a result, abstract forms will receive a concrete appearance.

Hanne Laland lives near the sea in the south of Norway. She is an autodidact artist and also a psychological therapist and yoga teacher. She has her education from Asian philosophy and lived two years (2004-2006) in Tokyo where she started painting with ink.

Her art creation is a mix between figurative and abstract. She works on canvas, linen, paper and steel. Her mediums are acrylic, Japanese ink, pencil and pastel and her favourite tools are calligraphy brushes. The ink and the brushes give her a special freedom.

She is fascinated by simplicity in our complicated world. At work, she always wants to communicate a feeling or a bit of the souls of her motifs, rather than just painting an aesthetic face. The eyes, the hands or the body language in her pictures play their parts. The balance/unbalance between black and white does play a part. She likes the challenge it gives her to express the message only in black and white. Black and white make the duality, stillness and chaos, light and dark. She finds inspiration in the Asian philosophy and thinks that the wheat culture has a lot to learn from the rice culture when it comes to focus on inner peace and its value. Hanne Laland has displayed her art in different art events in Norway. Her breakthrough came in China in 2017 at Museum of contemporary art, Beijing exhibited via Pashmin Art.

Natalja Nouri is a freelance artist born in Latvia's capital, Riga. She lives and works in Hamburg. Her art is defined by the concept of "Nature Mysticism and Symbols - Alchemy of Cultures". In her work, cultures, beliefs, symbol languages and religions of the East and the West meet. They collide, mingle and show how everything is related to each other and inspires each other. Microcosm and macrocosm are inextricably linked in her art. Many of her symbolic works are characterized by overt or covert symmetric structures.

The artist uses the motif of the genetic chain repeatedly to show how the origins of man are connected with nature and cosmos in an indissoluble bond. She is constantly searching for symbolic and allegorical representations of mental, spiritual and psychological contexts. The interpretation of her pictograms presupposes knowledge of theology, cosmology, psychology, Kabbalah and mathematics. Natalia Nouri's paintings draw the viewer into contemplation and meditation. The energy that emanates from her paintings in the form of currents flowing from darkness to light, from negative to positive, and from male to female, does not seem wild and fierce, but somehow contained - tamed. So the power of Eros yields itself to Logos.